

Ignite your productivity.



SmartDraft 17

SmartDraft 17 is a powerful drafting toolbox for AutoCAD 2009 - 2018 / Civil 3D 2009 - 2018

Note: SmartDraft will **NOT** run in any version of AutoCAD LT.

SmartDraft, Inc. Copyright (c) 1989 - 2017

Important: The installation **does not** automatically load the SmartDraft menu. After installation, follow AutoCAD setup instructions below.

SmartDraft Manual

The [SmartDraft Manual](#), in PDF format, is in the SmartDraft's installation folder.

If you have customized SmartDraft to follow your own CAD standards, review these changes to the Customization Template and Style files and make any of the changes necessary to the files in your Customization Templates.

Setup

1. Make a backup copy of the original media.
2. You will need 175 MB of free disk space to complete the installation process.
3. Run SmartDraft 17.exe
Enter destination drive and folder

AutoCAD Setup

AutoCAD Civil 3D, AutoCAD or AutoCAD Map 3D 2010 - 2018

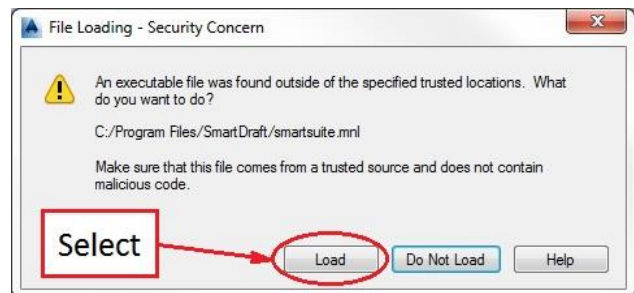
- a. Type: **cuiload** and press ENTER
Select the Browse button and go to the SmartDraft installation folder:
Only load one of the following menus based on the product you purchased.
Suite, PConnect, and HEC-RAS Tools: Select SmartSuite.cuix
Survey, and PConnect: Select SmartSurvey.cuix
PConnect only: Select SmartPConnect.cuix
HEC-RAS Tools only: Select SmartHydro.cuix
Construction Notes only: Select SmartCNote.cuix

Select the **Load** button

Warning for AutoCAD 2014 through 2018:

When the SmartDraft menu is loaded for the first time, the **File Loading - Security Concern** dialog box may appear. If it does, you **must** select the **Load** button for SmartDraft to work correctly. Note: The listed file could be smarthydro.mnl, smartpconnect.mnl, smartsuite.mnl, smartsurvey.mnl.

or



AutoCAD 2009, Land Desktop 2009, and Civil 3D 2009

- a. Type: **cuiload** and press ENTER

Select the Browse button and go to the SmartDraft installation folder:

Only load one of the following menus based on the product you purchased.

Suite, PConnect, and HEC-RAS Tools:	Select SmartSuite2009.cui
Survey, and PConnect:	Select SmartSurvey2009.cui
PConnect only:	Select SmartPConnect2009.cui
HEC-RAS Tools only:	Select SmartHydro2009.cui
Construction Notes only:	Select SmartCNote2009.cui

Select the **Load** button

- b. To register the software either:

Individual Seat License

At the AutoCAD Command prompt follow the steps below:

Type: **SmartAbout** ENTER

From the **About** dialog box, select the **Authorization** button

Owner's Name: Enter the company or owner's name associated with the license

Serial Number: Enter the supplied serial number

Authorization Code: Enter the supplied authorization code

or

Site license:

Copy the provided license file (SmartDraft17.lic) to the program's installation folder

The default installation folder is C:\Program Files\SmartDraft

SmartDraft Customization Instructions

Customization Templates

Customization Template files for the program are located in the program's installation subfolder \Template
Users must have Read and Write Rights to this folder and subfolders to edit or customize SmartDraft

The customization folder \Template can be located and/or named as needed on your system. If it is not placed in the default location, the PROJDIR= pointer in the SMARTDRAFTSETUP.INI file must be edited to reflect change in the location and/or name

Sample: SMARTDRAFTSETUP.INI

[Program]

TemplateFldr=C:\ProgramData\SmartDraft\Template

Customization Template folder after the =