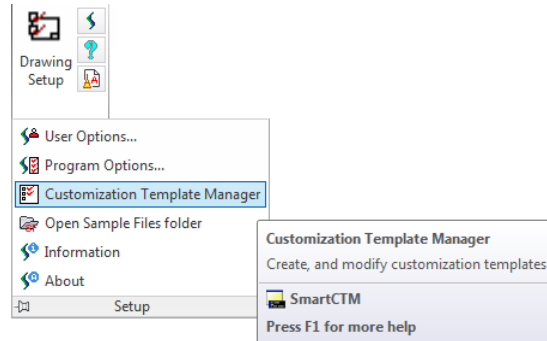


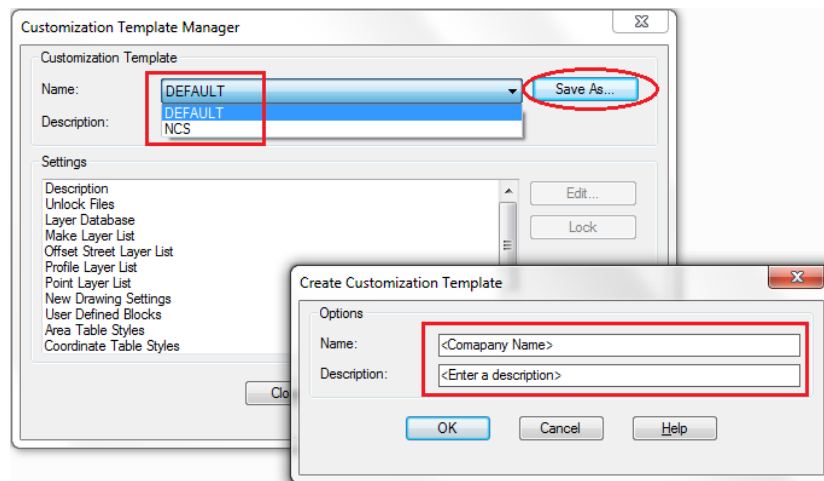
Creating a Customization Template

SmartDraft uses Customization Templates as a means to organize and maintain standard settings for associated drawings. These templates determine the basic drawing settings, such as decimal precision, dimension variables, text styles, and other settings. Likewise, they determine global settings, such as layer names and properties, block libraries, new drawing settings, and labeling styles. Template data files include the layer database, labeling styles, make layer list, point layer list, profile layer list, template description file, new drawing settings, special linetypes, and user defined blocks. Also, templates allow user defined blocks to be substituted for the blocks used by SmartDraft.

From the **SmartDraft** tab, select the down arrow on the **Setup** panel and select the **Customization Template Manager** command.



In the **Customization Template Manager** dialog, either select the Default (original SmartDraft layers), or NCS (our version of the National CAD standard layers) customization template as the template to use as the base of your own company's SmartDraft Customization Template.



Select the **Save As** button to create a copy of the selected customization template.

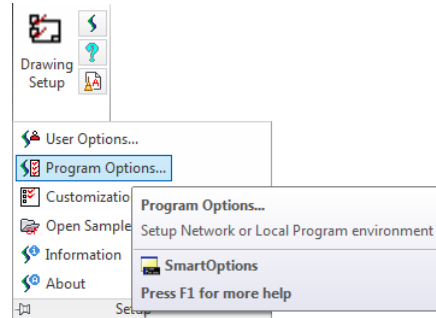
In the **Create Customization Template** dialog, enter the name <Company Name> you desire to use for your customization template.

Enter a **Description** <Enter a description> to be associated to the customization template. This is important if your company choices to have multiple customization templates within SmartDraft.

For full details on the Customization Template, read the **Customization** section of the help file. When modifying the layer database, used the **Customization Guide Appendix** to find which commands are associated to the various layer database index numbers.

Setting up SmartDraft to use your company defined Customization Template

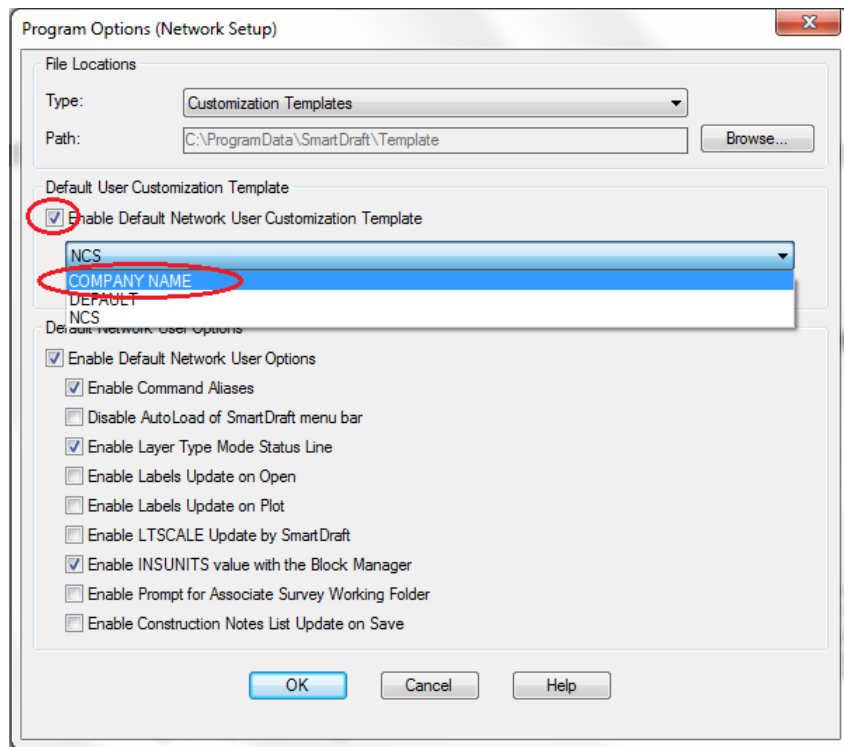
From the **SmartDraft** tab, select the down arrow on the **Setup** panel and select the **Program Options...** command.



In the **Program Options** dialog, check the **Enable Default Network User Customization Template**.

Select the customization template created for your company <Company Name>.

There are other settings which can be set for all users at the network level.



- Enable Command Aliases:** Check box to enable SmartDraft's **Command Aliases**.
- Disable Autoload of SmartDraft's menu bar:** Check box to disable the autoload feature, which loads SmartDraft's main pull-down menu.
- Enable Layer Type Mode Status Line:** Check box to enable SmartDraft's Layer Type at the Mode Status Line.
- Enable Labels Update on Open:** Check box to enable Labels Update on Open. See Update Labels
- Enable Labels Update on Plot:** Check box to enable Labels Update on Plot. See Update Labels
- Enable LTSCALE Update by SmartDraft:** Check box to enable SmartDraft's ability to change the LTSCALE in Drawing Setup or Horizontal Scale.

- Enable INSUNITS value with the Block Manager:** Check box to enable the SmartDraft Block and Detail Manager to use the AutoCAD settings, INSUNITS, INSUNITSDEFSOURCE, and INSUNITSDEFTARGET when inserting blocks or Xrefs.
- Enable Prompt for Associate Survey Working Folder** Check box to enable the SmartDraft's Prompt for Associate Survey Working Folder.
- Enable Construction Notes List Update on Save** Check box to enable the SmartDraft's Construction Notes List: Update on Save

Setting up the User (network installation)

At each workstation and for each AutoCAD type (Civil 3D, Map, AutoCAD, Land Desktop).

1. Open AutoCAD
2. Type: CUILOAD
3. Browse and locate the SmartSuite.cuix in the <SmartDraft installation folder>
4. Load the SmartSuite.cuix
5. Change to the SmartDraft tab
6. In the Setup Panel select the down arrow
7. Select **User Options...**
8. Confirm the User Customization Template created for your company <Company Name> is set as the customization template.
9. Confirm any of the other User Options.
10. Select **OK** to save changes.
11. Repeat 1 – 10 for each AutoCAD installation.

